
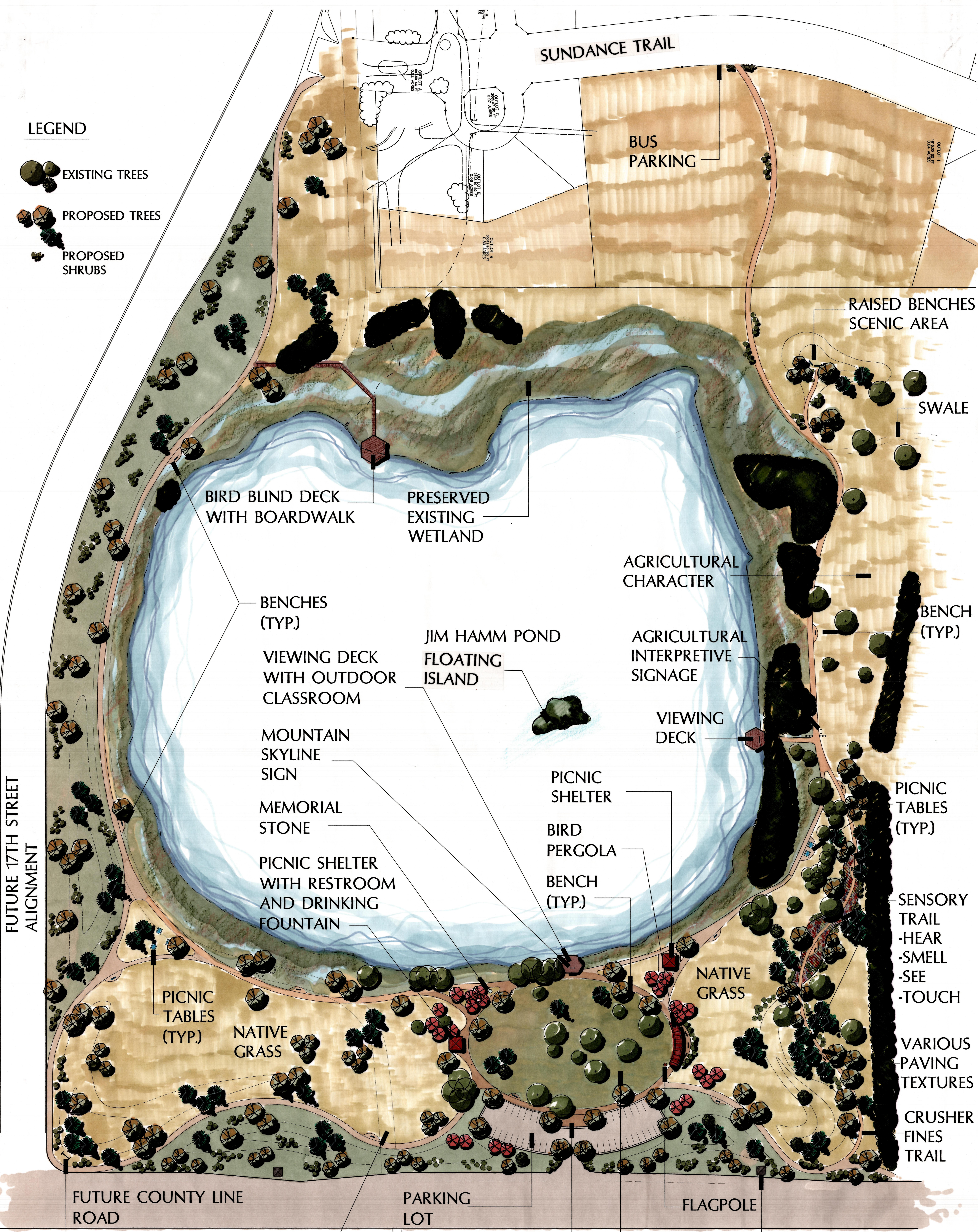


LEGEND

-  EXISTING TREES
-  PROPOSED TREES
-  PROPOSED SHRUBS



FUTURE COUNTY LINE ROAD

PARK SIGN

EXISTING 17TH AVE.

PARKING LOT

SITE SPECIFIC IMPRESSIONS IN WALK

IRRIGATED NATIVE GRASS

EXISTING UTILITY TOWERS

FLAGPOLE

JIM HAMM NATURE AREA

MASTER PLAN DESIGN DEVELOPMENT

JANUARY 5, 2001

CITY OF LONGMONT

DESIGN CONCEPTS
Community and Landscape Architects

211 North Public Road, Suite 200 • Lafayette, Colorado 80026
(303) 664-5301 • FAX (303) 664-5313 • concepts@desconla.com

0' 60' 90' 180'
SCALE 1" = 60'

