

LEGEND


	RIGHT OF WAY REQUIRED
	SIDEWALK
	RAISED MEDIAN

Print Date: 4/3/2014
 File Name: 13022 Nelson and Hover04.dgn
 Scale: 1:50

MULLER ENGINEERING CO., INC. CONSULTING ENGINEERS
 777 S. Wadsworth Blvd. #4 - 100
 Lakewood, CO 80226
 303-988-4939
 Pz/13-022.01/CAD

Sheet Revisions		
Date:	Comments	Init.

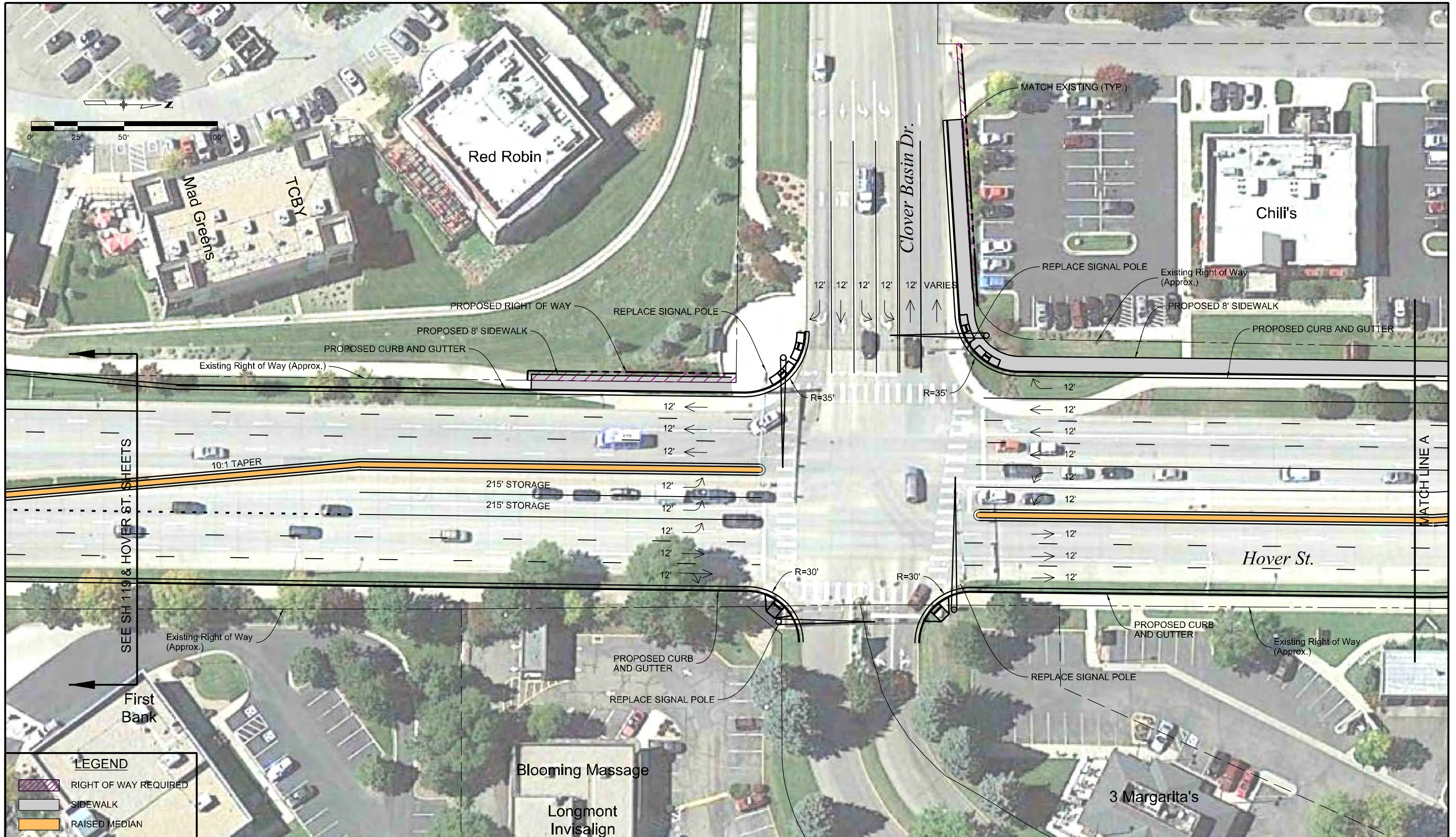
PREPARED FOR:
 CITY OF LONGMONT
 385 KIMBARK STREET
 LONGMONT, COLORADO 80501
 (303) 651-8323
 CONTACT: Bob Ball



As Constructed
No Revisions:
Revised:
Void:

NELSON RD. & HOVER ST. NORTH LEG			
Designer:	SNG	Structure Numbers	
Detailer:	CLJ		
Sheet Subset:	PLAN	Subset Sheets:	4 OF 4

Project No./Code
Sheet Number



copy: 2:53:08 PM P:\13-022.01 Longmont Roadway Improvement Plan\CAD\13022 Clover Basin and Hover01.dgn
 CDOT-Details\Printer_V8.tbl
 4/3/2014

SEE SH 119 & HOVER ST. SHEETS

MATCH LINE A

LEGEND	
	RIGHT OF WAY REQUIRED
	SIDEWALK
	RAISED MEDIAN

Print Date: 4/3/2014
File Name: 13022 Clover Basin and Hover01.dgn
Scale: 1:50
MULLER ENGINEERING CO., INC. CONSULTING ENGINEERS 777 S. Wadsworth Blvd. #4 - 100 Lakewood, CO 80226 303-988-4939 P:\13-022.01\CAD

Sheet Revisions		
Date:	Comments	Init.

PREPARED FOR:
 CITY OF LONGMONT
 385 KIMBARK STREET
 LONGMONT, COLORADO 80501
 (303) 651-8323
 CONTACT: Bob Ball



As Constructed
No Revisions:
Revised:
Void:

CLOVER BASIN DR. & HOVER ST. INTERSECTION			
Designer:	SNG	Structure Numbers	
Detailer:	CLJ		
Sheet Subset:	PLAN	Subset Sheets:	1 OF 2

Project No./Code
Sheet Number



copy: 3/6/27 PM P:\13-022.01 Longmont Roadway Improvement Plan\CAD\13022 Clover Basin and Hover02.dgn
 CDOT-Design\Printer_V81.tbl
 4/3/2014

Print Date: 4/3/2014
 File Name: 13022 Clover Basin and Hover02.dgn
 Scale: 1:50

MULLER ENGINEERING CO., INC.
 CONSULTING ENGINEERS
 777 S. Wadsworth Blvd.
 #4 - 100
 Lakewood, CO 80226
 303-988-4939

Sheet Revisions		
Date:	Comments	Init.

PREPARED FOR:
 CITY OF LONGMONT
 385 KIMBARK STREET
 LONGMONT, COLORADO 80501
 (303) 651-8323
 CONTACT: Bob Ball



As Constructed	CLOVER BASIN DR. & HOVER ST.		Project No./Code
No Revisions:	NORTH LEG		
Revised:	Designer: SNG	Structure Numbers	
Void:	Detailer: CLJ	Subset Sheets: 2 OF 2	Sheet Number



LEGEND

	RIGHT OF WAY REQUIRED
	SIDEWALK
	RAISED MEDIAN

copy: 2:53:18 PM P:\13-022.01 Longmont Roadway Improvement Plan\CAD\13022_119 and Hover01.dgn
 CDOT-Debra\Printer_Vbl\p13022_119 and Hover01.dgn

Print Date: 4/3/2014
File Name: 13022_119 and Hover01.dgn
Scale: 1:50
MULLER ENGINEERING CO., INC. CONSULTING ENGINEERS 777 S. Wadsworth Blvd. #4 - 100 Lakewood, CO 80226 303-988-4939 P:\13-022.01\CAD

Sheet Revisions		
Date:	Comments	Init.

PREPARED FOR:
 CITY OF LONGMONT
 385 KIMBARK STREET
 LONGMONT, COLORADO 80501
 (303) 651-8323
 CONTACT: Bob Ball



As Constructed
No Revisions:
Revised:
Void:

SH 119 & HOVER ST. WEST LEG			
Designer:	SNG	Structure Numbers	
Detailer:	CLJ		
Sheet Subset:	PLAN	Subset Sheets:	1 OF 5

Project No./Code
Sheet Number



copy: 2:53:22 PM P:\13-022.01 Longmont Roadway Improvement Plan\CAD\13022_119 and Hover02.dgn
 4/3/2014
 C:\Users\pfaller\My Documents\CAD\13-022.01 Longmont Roadway Improvement Plan\CAD\13022_119 and Hover02.dgn

LEGEND

- RIGHT OF WAY REQUIRED
- SIDEWALK
- RAISED MEDIAN

Print Date: 4/3/2014
 File Name: 13022_119 and Hover02.dgn
 Scale: 1:50

MULLER ENGINEERING CO., INC.
 CONSULTING ENGINEERS
 777 S. Wadsworth Blvd.
 #4 - 100
 Lakewood, CO 80226
 303-988-4939

Sheet Revisions		
Date:	Comments	Init.

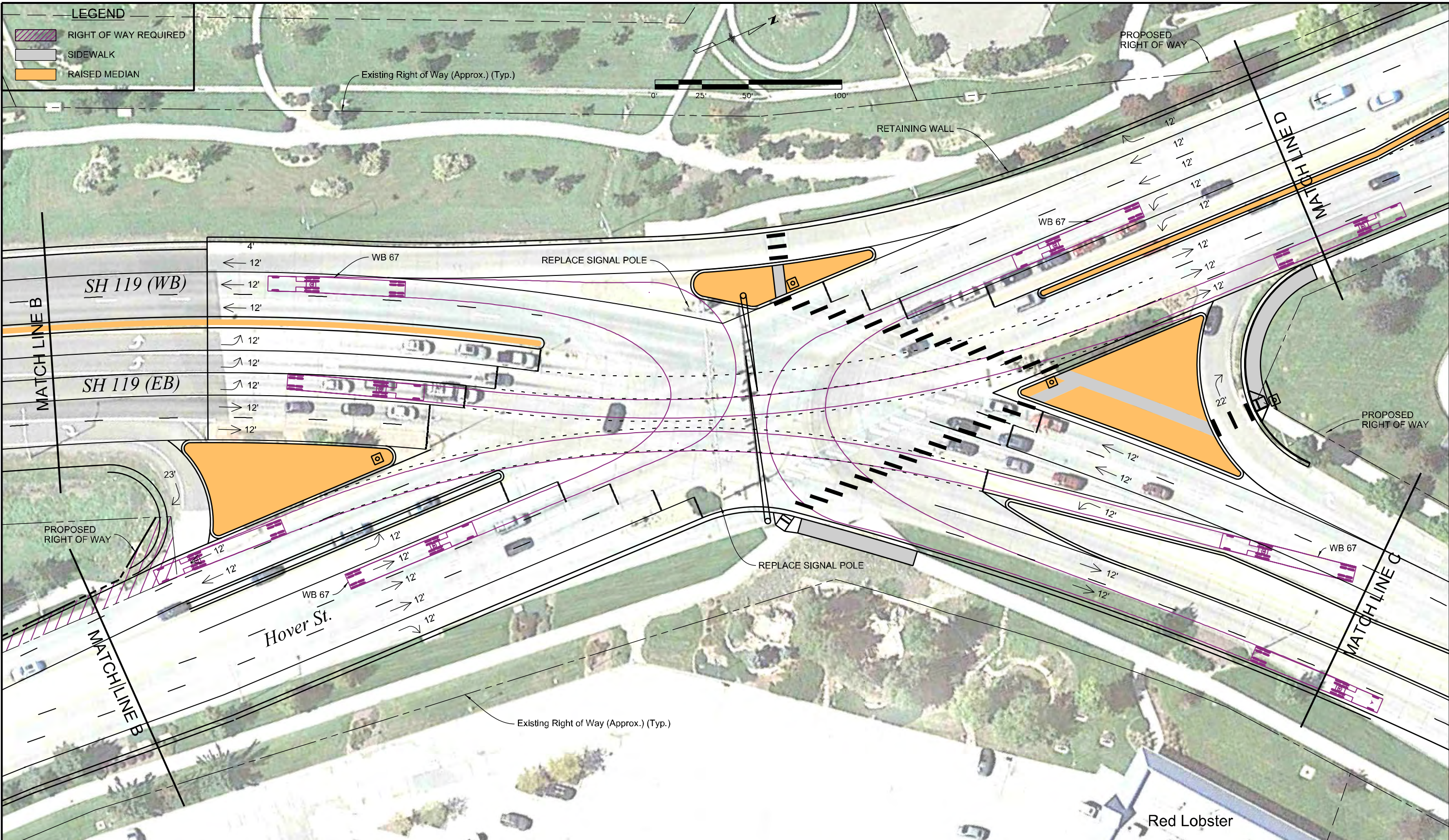
PREPARED FOR:
 CITY OF LONGMONT
 385 KIMBARK STREET
 LONGMONT, COLORADO 80501
 (303) 651-8323
 CONTACT: Bob Ball



As Constructed
No Revisions:
Revised:
Void:

SH 119 & HOVER ST. SOUTH LEG			
Designer:	SNG	Structure Numbers	
Detailer:	CLJ		
Sheet Subset:	PLAN	Subset Sheets:	2 OF 5

Project No./Code
Sheet Number



copy: 2:53:27 PM P:\13-022.01 Longmont Roadway Improvement Plan\CAD\13022_119 and Hover03.dgn
 4/3/2014
 CDOT-FinTable_V8-rev1.dwg

Print Date: 4/3/2014
File Name: 13022_119 and Hover03.dgn
Scale: 1:50
MULLER ENGINEERING CO., INC. CONSULTING ENGINEERS 777 S. Wadsworth Blvd. #4 - 100 Lakewood, CO 80226 303-988-4939
P:\13-022.01\CAD

Sheet Revisions		
Date:	Comments	Init.

PREPARED FOR:
 CITY OF LONGMONT
 385 KIMBARK STREET
 LONGMONT, COLORADO 80501
 (303) 651-8323
 CONTACT: Bob Ball




As Constructed
No Revisions:
Revised:
Void:

SH 119 & HOVER ST. INTERSECTION			
Designer:	SNG	Structure Numbers	
Detailer:	CLJ		
Sheet Subset:	PLAN	Subset Sheets:	3 OF 5

Project No./Code
Sheet Number



copy: 2:53:31 PM P:\13-022.01 Longmont Roadway Improvement Plan\CAD\13022_119 and Hover04.dgn
 4/3/2014
 C:\Users\muller\Documents\CAD\13022_119 and Hover04.dgn

Print Date: 4/3/2014
File Name: 13022_119 and Hover04.dgn
Scale: 1:50
 MULLER ENGINEERING CO., INC. CONSULTING ENGINEERS 777 S. Wadsworth Blvd. #4 - 100 Lakewood, CO 80226 303-988-4939 <small>P:\13-022.01\CAD</small>

Sheet Revisions		
Date:	Comments	Init.

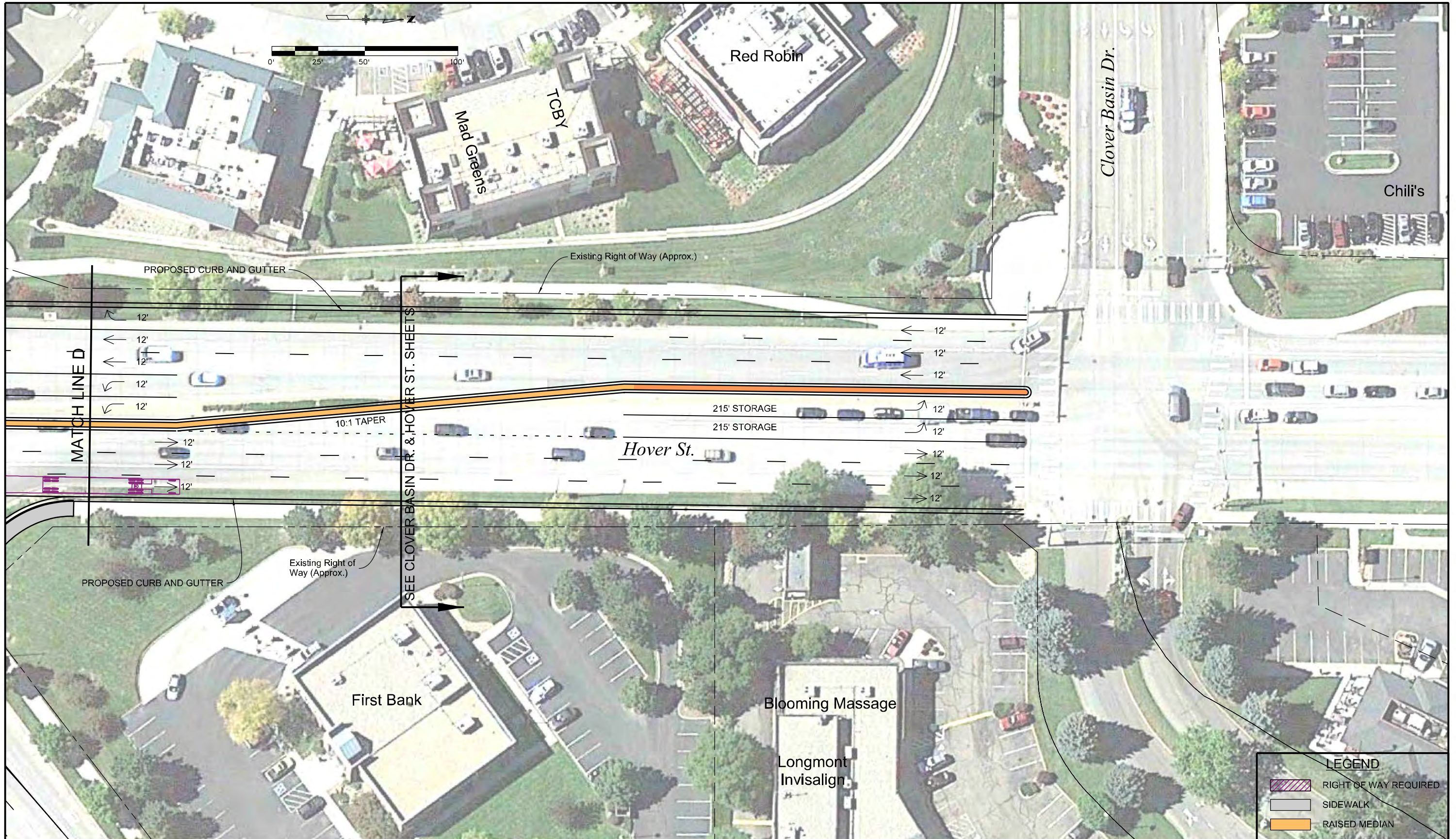
PREPARED FOR:
 CITY OF LONGMONT
 385 KIMBARK STREET
 LONGMONT, COLORADO 80501
 (303) 651-8323
 CONTACT: Bob Ball



As Constructed
No Revisions:
Revised:
Void:

SH 119 & HOVER ST. EAST LEG			
Designer:	SNG	Structure Numbers	
Detailer:	CLJ		
Sheet Subset:	PLAN	Subset Sheets:	4 OF 5

Project No./Code
Sheet Number




copy: 2:53:41 PM P:\13-022.01 Longmont Roadway Improvement Plan\CAD\13022_119 and Hover05.dgn
 4/3/2014 CDOT-DefaultPrinter_V81.tbltag

LEGEND	
	RIGHT OF WAY REQUIRED
	SIDWALK
	RAISED MEDIAN

Print Date: 4/3/2014
File Name: 13022_119 and Hover05.dgn
Scale: 1:50
MULLER ENGINEERING CO., INC. CONSULTING ENGINEERS 777 S. Wadsworth Blvd. #4 - 100 Lakewood, CO 80226 303-988-4939 P:/13-022.01/CAD

Sheet Revisions		
Date:	Comments	Init.

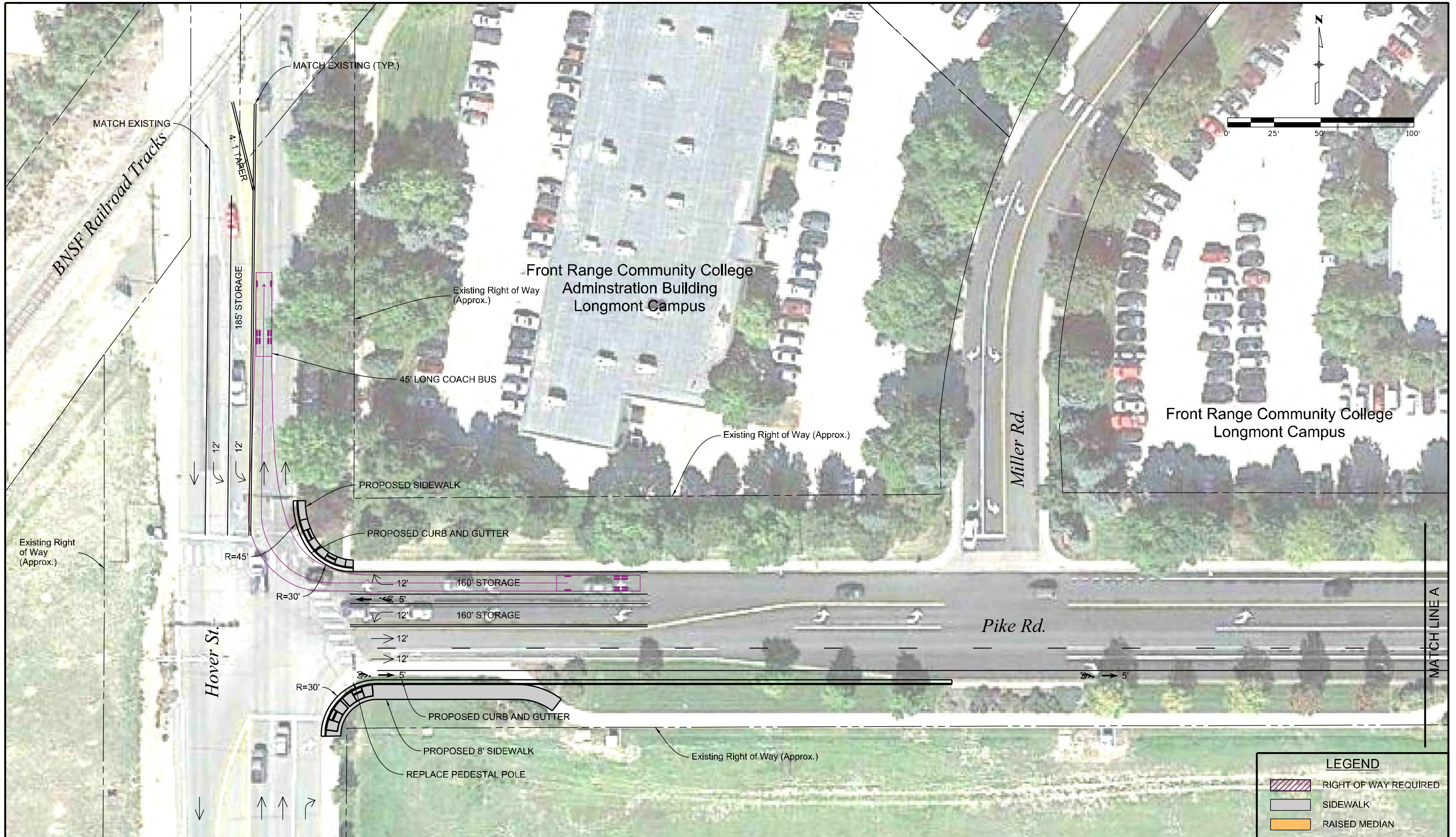
PREPARED FOR:
 CITY OF LONGMONT
 385 KIMBARK STREET
 LONGMONT, COLORADO 80501
 (303) 651-8323
 CONTACT: Bob Ball



As Constructed
No Revisions:
Revised:
Void:

SH 119 & HOVER ST. NORTH LEG			
Designer:	SNG	Structure Numbers:	
Detailer:	CLJ	Subset Sheets:	5 OF 5
Sheet Subset:	PLAN		

Project No./Code
Sheet Number



copy 2:53:46 PM P:\13-022.01 Longmont Roadway Improvement Plan\CAD\13022 Pike and Hover01.dgn
 CDOT-FinTable V8-revised.tbl
 4/3/2014

LEGEND	
	RIGHT OF WAY REQUIRED
	SIDEWALK
	RAISED MEDIAN

Print Date: 4/3/2014
File Name: 13022 Pike and Hover01.dgn
Scale: 1:50
MULLER ENGINEERING CO., INC. 777 S. Wadsworth Blvd. CONSULTING ENGINEERS #4 - 100 Lakewood, CO 80226 303-988-4939
P:/13-022.01/CAD

Sheet Revisions		
Date:	Comments	Init.

PREPARED FOR:
 CITY OF LONGMONT
 385 KIMBARK STREET
 LONGMONT, COLORADO 80501
 (303) 651-8323
 CONTACT: Bob Ball



As Constructed
No Revisions:
Revised:
Void:


PIKE ROAD & HOVER ST. INTERSECTION			
Designer:	SNG	Structure Numbers	
Detailer:	CLJ		
Sheet Subset:	PLAN	Subset Sheets:	1 OF 2

Project No./Code
Sheet Number



copy: 2:53:50 PM P:\13-022.01 Longmont Roadway Improvement Plan\CAD\13022 Pike and Hover02.dgn
 CDOT-DefaultPrinter_V8.tbl
 4/3/2014

Print Date: 4/3/2014
 File Name: 13022 Pike and Hover02.dgn
 Scale: 1:50



MULLER ENGINEERING CO., INC. 777 S. Wadsworth Blvd.
 CONSULTING ENGINEERS #4 - 100
 Lakewood, CO 80226
 303-988-4939
 P:\13-022.01\CAD

Sheet Revisions		
Date:	Comments	Init.

PREPARED FOR:
 CITY OF LONGMONT
 385 KIMBARK STREET
 LONGMONT, COLORADO 80501
 (303) 651-8323
 CONTACT: Bob Ball


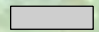



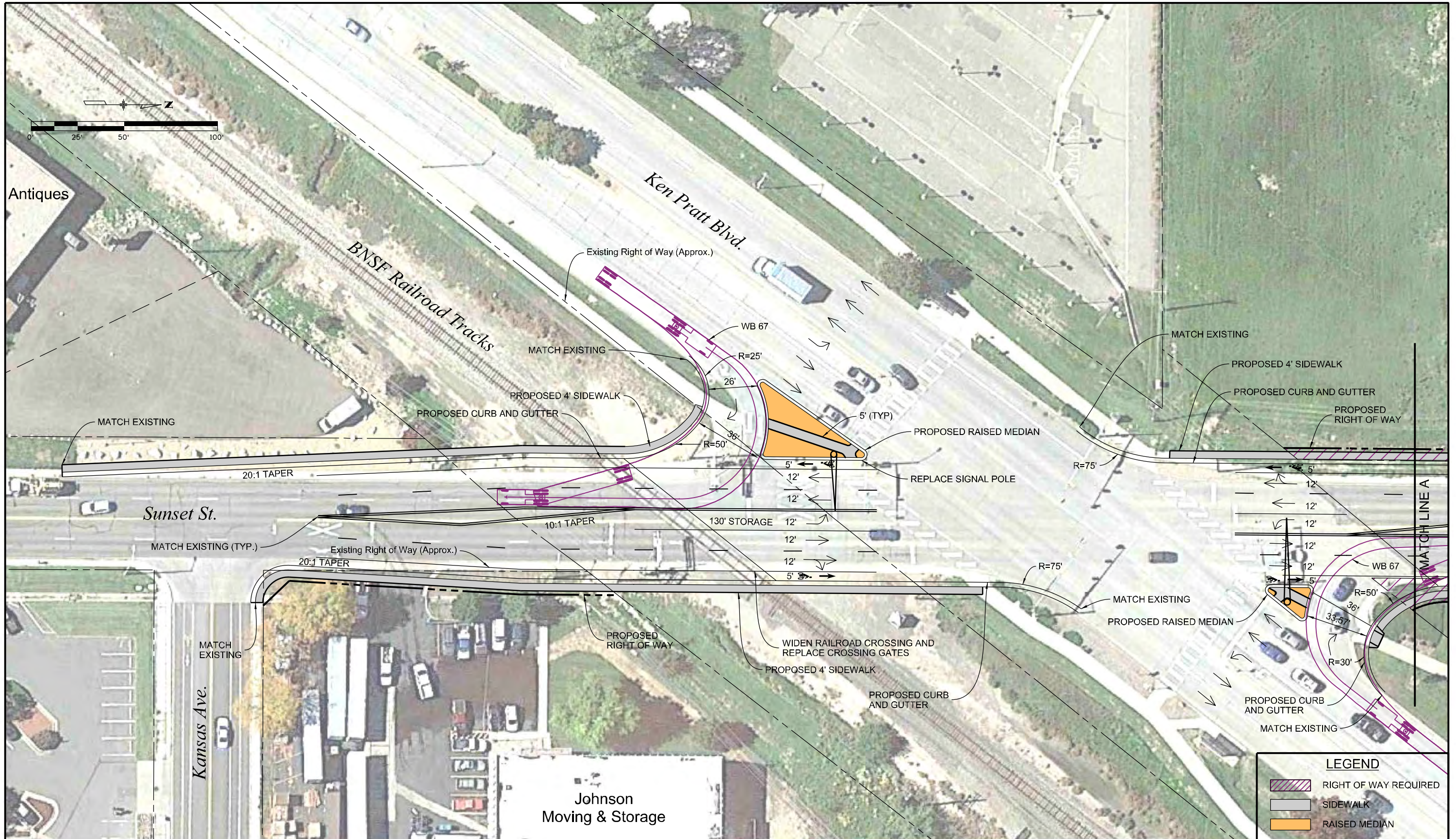
As Constructed
No Revisions:
Revised:
Void:

PIKE ROAD & HOVER ST. EAST LEG			
Designer:	SNG	Structure Numbers	
Detailer:	CLJ	Subset Sheets:	2 OF 2
Sheet Subset:	PLAN		

Project No./Code
Sheet Number

LEGEND

-  RIGHT OF WAY REQUIRED
-  SIDEWALK
-  RAISED MEDIAN



LEGEND	
	RIGHT OF WAY REQUIRED
	SIDEWALK
	RAISED MEDIAN

copy 2:53:54 PM P:\13-022.01 Longmont Roadway Improvement Plan\CAD\13022 Ken Pratt and Sunset01.dgn
 CDOT-Design\Finaler_V81bldg

Print Date: 4/3/2014

File Name: 13022 Ken Pratt and Sunset01.dgn

Scale: 1:50

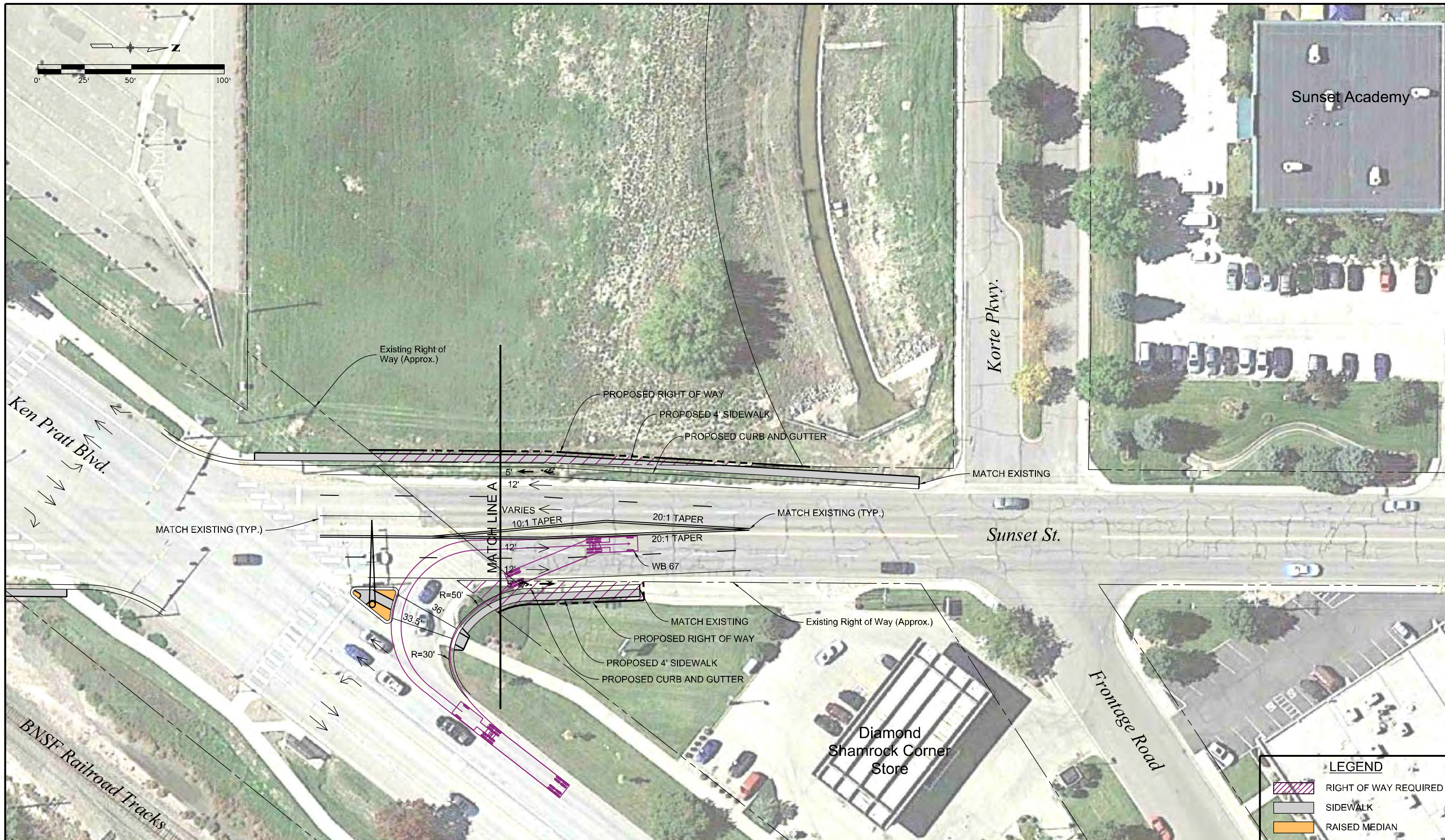
MULLER ENGINEERING CO., INC. CONSULTING ENGINEERS
 777 S. Wadsworth Blvd. #4 - 100
 Lakewood, CO 80226 303-988-4939
 P:\13-022.01\CAD

Sheet Revisions		
Date:	Comments	Init.

PREPARED FOR:
 CITY OF LONGMONT
 385 KIMBARK STREET
 LONGMONT, COLORADO 80501
 (303) 651-8323
 CONTACT: Bob Ball



As Constructed	KEN PRATT BLVD. & SUNSET ST. INTERSECTION		Project No./Code
No Revisions:	Designer:	SNG	
Revised:	Detailer:	CLJ	
Void:	Sheet Subset:	PLAN	Sheet Number
	Structure Numbers		
	Subset Sheets:	1 OF 2	

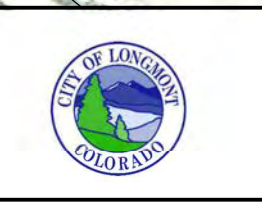


copy: 2:53:59 PM P:\13\022\01 Longmont Roadway Improvement Plans\CAD\13022 Ken Pratt and Sunset02.dgn
 4/3/2014
 CDOT-Draft\Printer_Vbl\bltag

Print Date: 4/3/2014
 File Name: 13022 Ken Pratt and Sunset02.dgn
 Scale: 1:50
MULLER ENGINEERING CO., INC. 777 S. Wadsworth Blvd.
 CONSULTING ENGINEERS #4 - 100
 Lakewood, CO 80226
 303-988-4939
 P:\13-022\01\CAD

Sheet Revisions		
Date:	Comments	Init.

PREPARED FOR:
 CITY OF LONGMONT
 385 KIMBARK STREET
 LONGMONT, COLORADO 80501
 (303) 651-8323
 CONTACT: Bob Ball



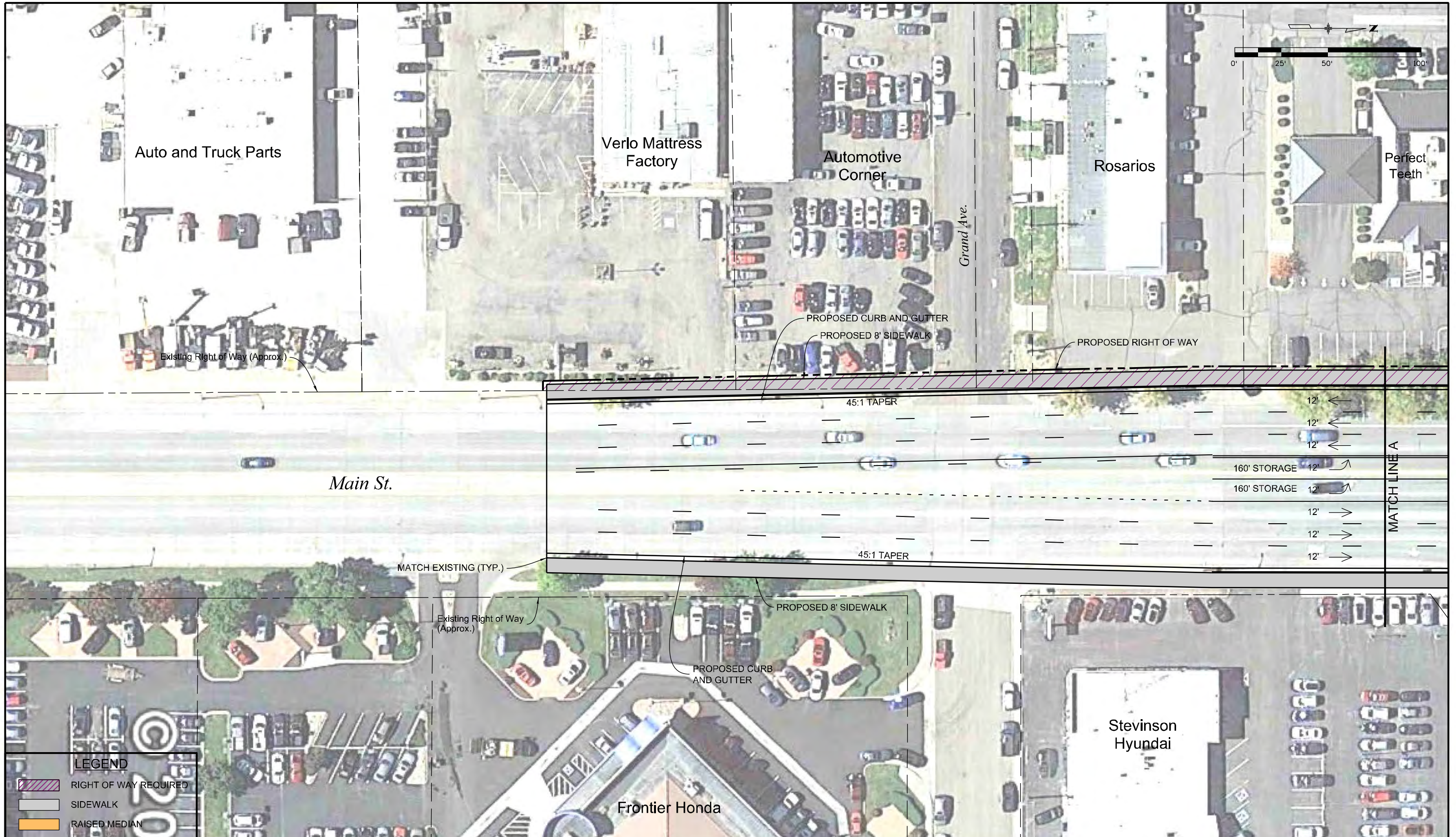
As Constructed
No Revisions:
Revised:
Void:

KEN PRATT BLVD. & SUNSET ST.			
NORTH LEG			
Designer:	SNG	Structure Numbers:	
Detailer:	CLJ	Subset Sheets:	2 OF 2
Sheet Subset:	PLAN		

Project No./Code
Sheet Number

LEGEND

- RIGHT OF WAY REQUIRED
- SIDEWALK
- RAISED MEDIAN




copy: 2:54:03 PM P:\13-022.01 Longmont Roadway Improvement Plan\CAD\13022 Ken Pratt and Main01.dgn
 CDOT-DefaultPrinter_V8.rvt
 4/3/2014

LEGEND	
	RIGHT OF WAY REQUIRED
	SIDEWALK
	RAISED MEDIAN

Print Date: 4/3/2014
File Name: 13022 Ken Pratt and Main01.dgn
Scale: 1:50
MULLER ENGINEERING CO., INC. CONSULTING ENGINEERS 777 S. Wadsworth Blvd. #4 - 100 Lakewood, CO 80226 303-988-4939 P:\13-022.01\CAD

Sheet Revisions			
Date:	Comments	Init.	

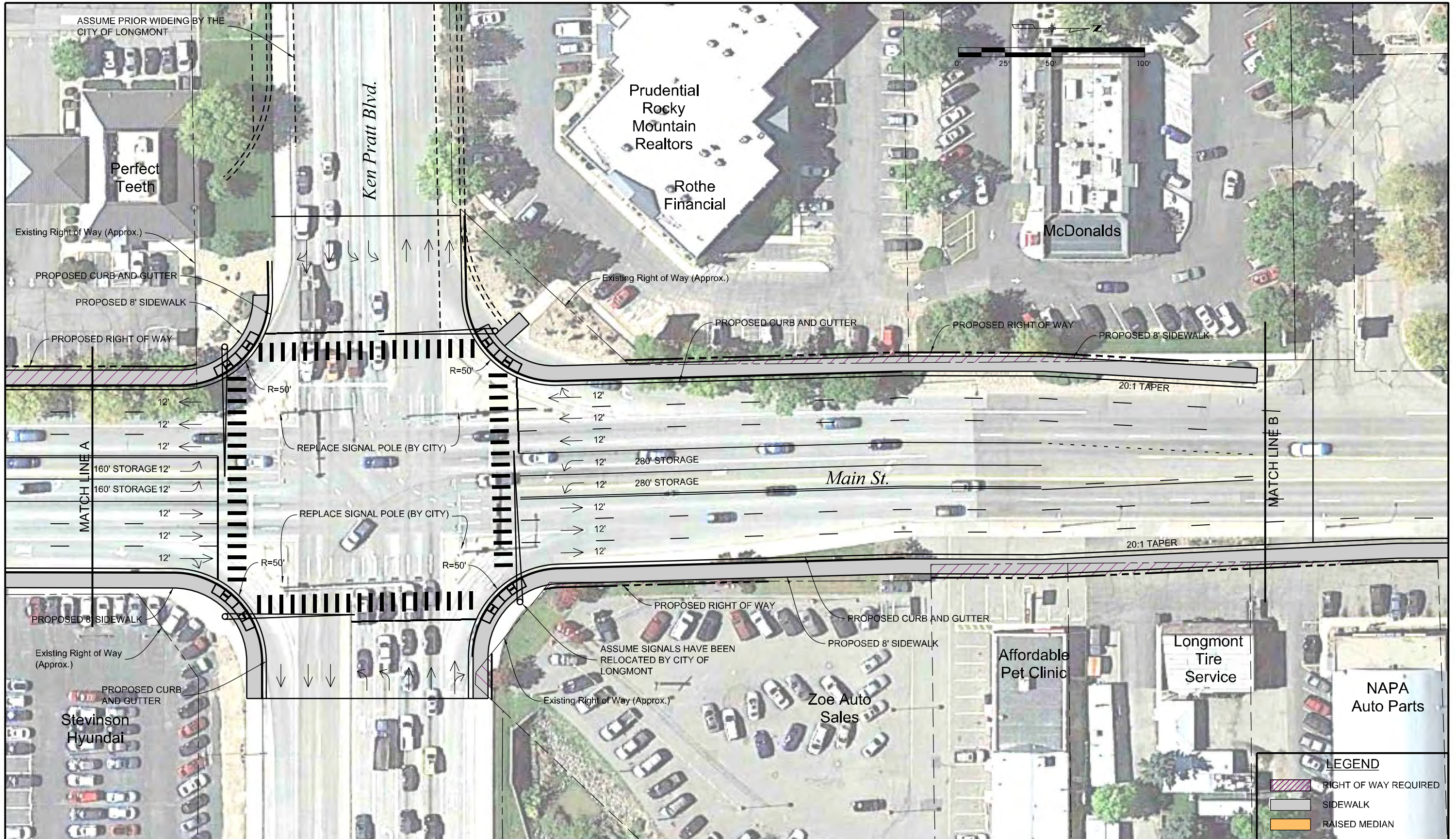
PREPARED FOR:
 CITY OF LONGMONT
 385 KIMBARK STREET
 LONGMONT, COLORADO 80501
 (303) 651-8323
 CONTACT: Bob Ball



As Constructed
No Revisions:
Revised:
Void:

KEN PRATT & MAIN SOUTH LEG			
Designer:	SNG	Structure Numbers	
Detailer:	CLJ	Subset Sheets:	1 OF 3
Sheet Subset:	PLAN		

Project No./Code
Sheet Number



copy: 2:54:08 PM P:\13-022.01 Longmont Roadway Improvement Plan\CAD\13022 Ken Pratt and Main02.dgn
 CDOT-Design\Final_V8.tbl
 4/3/2014

Print Date: 4/3/2014
 File Name: 13022 Ken Pratt and Main02.dgn
 Scale: 1:50

MULLER ENGINEERING CO., INC. 777 S. Wadsworth Blvd.
 CONSULTING ENGINEERS #4 - 100
 Lakewood, CO 80226
 303-988-4939
 P:\13-022.01\CAD

Sheet Revisions		
Date:	Comments	Init.

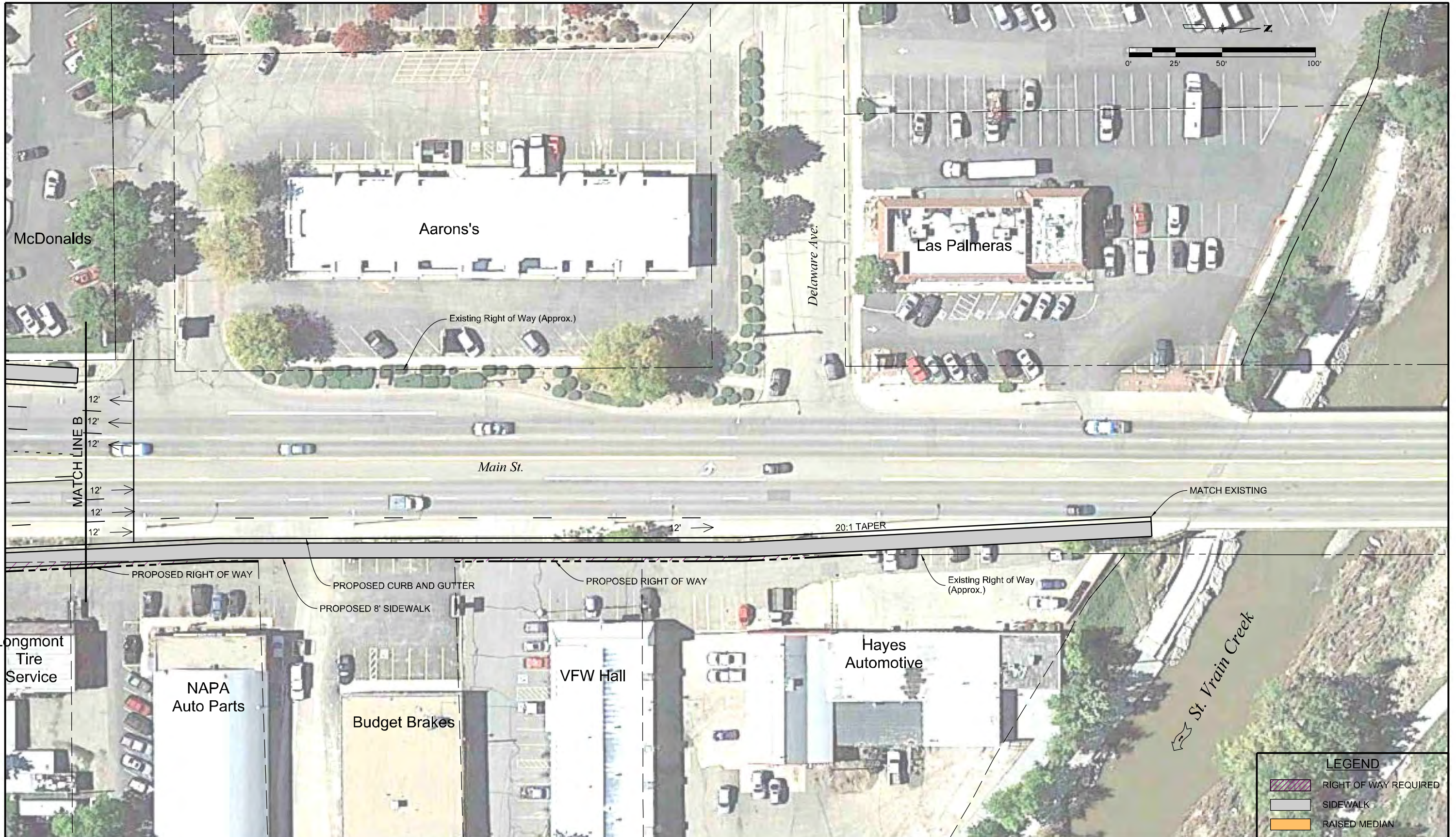
PREPARED FOR:
 CITY OF LONGMONT
 385 KIMBARK STREET
 LONGMONT, COLORADO 80501
 (303) 651-8323
 CONTACT: Bob Ball



As Constructed	KEN PRATT & MAIN ST. INTERSECTION		Project No./Code
No Revisions:	Designer: SNG	Structure Numbers	
Revised:	Detailer: CLJ		
Void:	Sheet Subset: PLAN	Subset Sheets: 2 OF 3	Sheet Number

LEGEND

- RIGHT OF WAY REQUIRED
- SIDEWALK
- RAISED MEDIAN



copy: 2:54:12 PM P:\13-022.01 Longmont Roadway Improvement Plan\CAD\13022 Ken Pratt and Main03.dgn
 CDOT-DefaultPrinter_V81.tbl
 4/3/2014

Print Date: 4/3/2014
 File Name: 13022 Ken Pratt and Main03.dgn
 Scale: 1:50

MULLER ENGINEERING CO., INC. CONSULTING ENGINEERS
 777 S. Wadsworth Blvd. #4 - 100
 Lakewood, CO 80226
 303-988-4939

Sheet Revisions		
Date:	Comments	Init.

PREPARED FOR:
 CITY OF LONGMONT
 385 KIMBARK STREET
 LONGMONT, COLORADO 80501
 (303) 651-8323
 CONTACT: Bob Ball



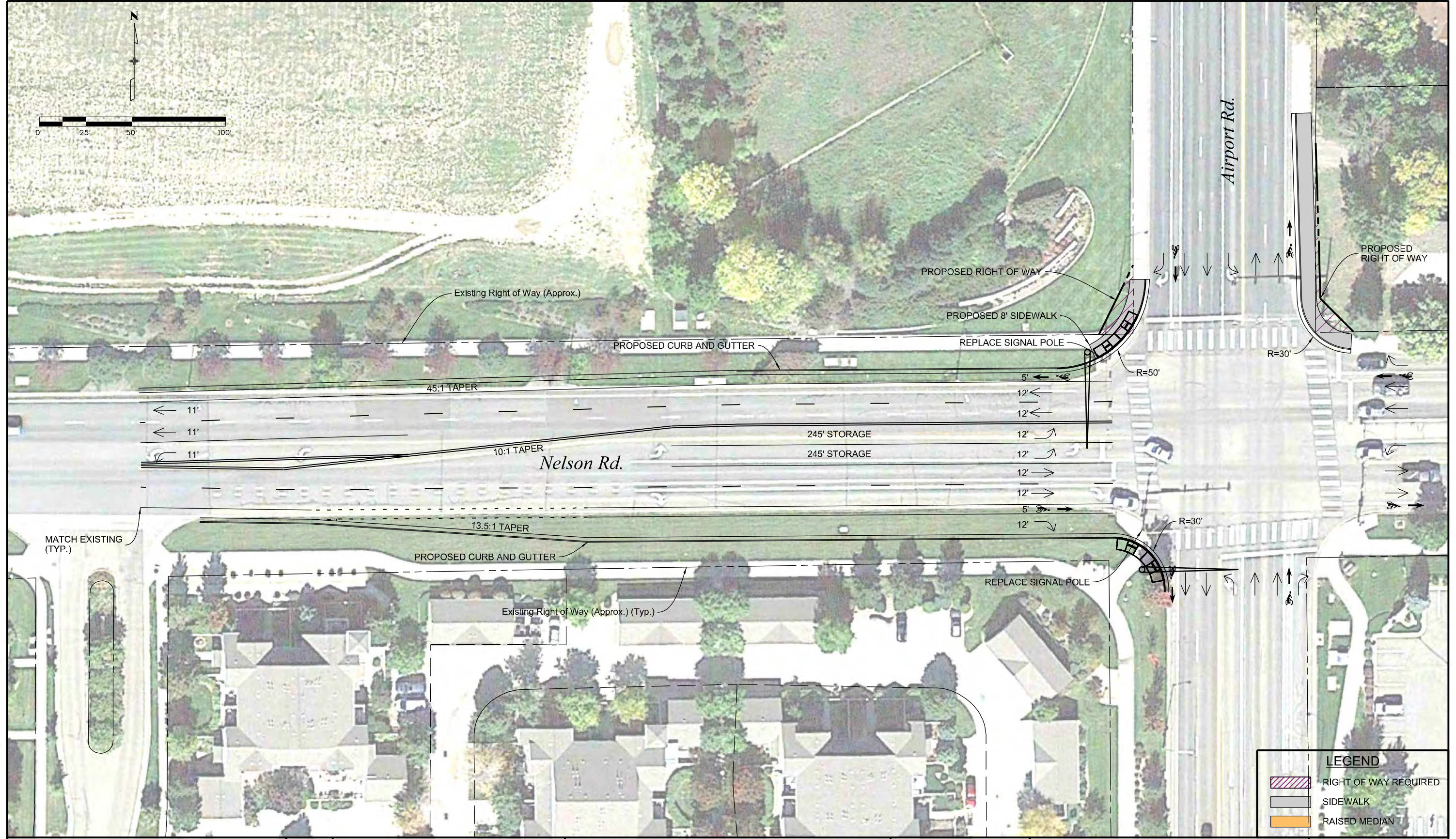
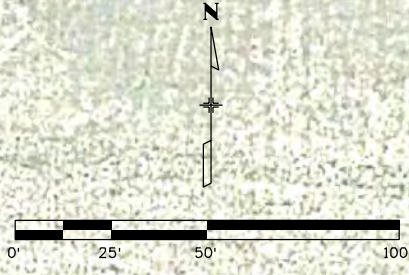
As Constructed
No Revisions:
Revised:
Void:

KEN PRATT & MAIN ST. NORTH LEG			
Designer:	SNG	Structure Numbers	
Detailer:	CLJ		
Sheet Subset:	PLAN	Subset Sheets:	3 OF 3

Project No./Code
Sheet Number

LEGEND

- RIGHT OF WAY REQUIRED
- SIDEWALK
- RAISED MEDIAN



copy: 2:54:17 PM P:\13-022.01 Longmont Roadway Improvement Plan\CAD\13022 Nelson and Airport01.dgn
 4/3/2014
 C:\DOT-Data\Printer_V8\lpltdlg

Print Date: 4/3/2014
File Name: 13022 Nelson and Airport01.dgn
Scale: 1:50
MULLER ENGINEERING CO., INC. CONSULTING ENGINEERS 777 S. Wadsworth Blvd. #4 - 100 Lakewood, CO 80226 303-988-4939

Sheet Revisions		
Date:	Comments	Init.

PREPARED FOR:
 CITY OF LONGMONT
 385 KIMBARK STREET
 LONGMONT, COLORADO 80501
 (303) 651-8323
 CONTACT: Bob Ball

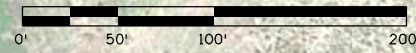


As Constructed
No Revisions:
Revised:
Void:

NELSON ROAD & AIRPORT ROAD INTERSECTION			
Designer:	SNG	Structure Numbers	
Detailer:	CLJ		
Sheet Subset:	PLAN	Subset Sheets:	1 OF 1

Project No./Code
Sheet Number

Fox Hill Country Club



LEGEND	
	RIGHT OF WAY REQUIRED
	SIDEWALK
	RAISED MEDIAN

Print Date: 4/3/2014
File Name: 13022 Ken Pratt and County Line01.dgn
Scale: 1:100
MULLER ENGINEERING CO., INC. 777 S. Wadsworth Blvd. CONSULTING ENGINEERS #4 - 100 Lakewood, CO 80226 303-988-4939
Pz/13-022.01/CAD

Sheet Revisions		
Date:	Comments	Init.

PREPARED FOR:
CITY OF LONGMONT
385 KIMBARK STREET
LONGMONT, COLORADO 80501
(303) 651-8323
CONTACT: Bob Ball



As Constructed
No Revisions:
Revised:
Void:

KEN PRATT BLVD. & COUNTY LINE RD. SOUTH LEG			
Designer:	SNG	Structure Numbers	
Detailer:	CLJ		
Sheet Subset:	PLAN	Subset Sheets:	1 OF 4

Project No./Code
Sheet Number

copy: 2:54:22 PM P:\13-022.01 Longmont Roadway Improvement Plan\CAD\13022 Ken Pratt and County Line01.dgn
 CDOT-DefaultPrinter_V8.plt
 4/3/2014