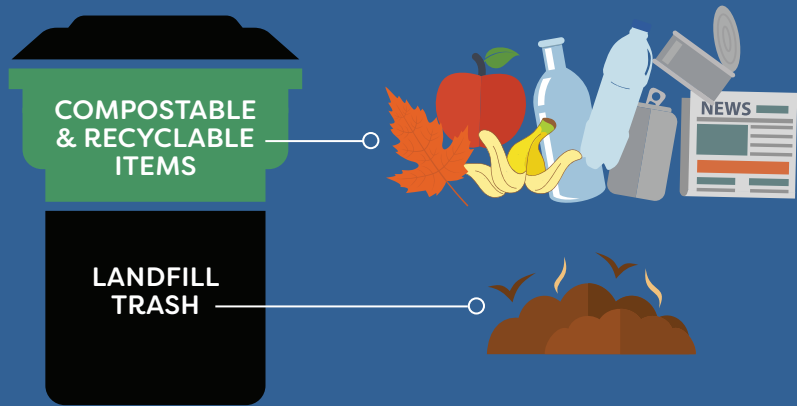


WasteDiverter



THINK BEFORE YOU THROW!

Much of what's in your trash cart could be recycled or composted



Nearly half of what's inside the average Longmont trash cart could be recycled or composted. That means you are most likely paying for more trash service than you need.

RIGHT SIZE YOUR TRASH

ONLY PAY FOR WHAT YOU NEED!

LARGE	MEDIUM	SMALL
\$24	\$12.90	\$6.50
PER MONTH	PER MONTH	PER MONTH

NEXT STEPS

REDUCE - Pay attention to what you purchase.

REUSE - Opt for items that go beyond single use & repair instead of replacing.

RECYCLE - Know what can be recycled and use your blue-lidded bin to max potential.

COMPOST - Sign up for curbside composting service or start a backyard compost bin.

REPLACING & REPAIRING CONTAINERS

The City will repair or replace containers that incur damage through routine use at no cost to the customer. Call 303-651-8416 or visit serviceworks.longmontcolorado.gov for more information.

The City does NOT wash carts; this is the resident's responsibility:

- In most cases, you can simply hose it out and let the water drain onto your yard
- For heavier duty cleaning, take it to a car wash
- There are professional service companies that specialize in trash cart washing – and they come to you home!

WASTE PROGRAM MANAGEMENT & UPDATES

Reducing and diverting waste from landfills through recycling and composting is a critical part of achieving the Longmont City Council's directives and contributes to a clean and safe community and healthy ecosystems that support clean air, water and soil.

The City of Longmont is committed to zero waste efforts and has put an aggressive plan in place to reach those goals.

Learn more about the Universal Recycling Ordinance

bit.ly/URO-Info

Extended Producer Responsibility information

recyclingforallcoloradans.org

Plastic Pollution Reduction Act information

[House Bill 21-1162 \[PDF\]](#)

PUT MORE TO GOOD USE

	Recycle and compost services are picked up every other week		
RECYCLING		COMPOSTING	
INCLUDED IN TRASH SERVICES		\$6.60	\$6.60
		PER MONTH	PER MONTH



WANT TO LEARN MORE?

Find more tips & tricks on our Waste Services blog

bit.ly/waste-services-tips

CONTACT US

LongmontColorado.gov/WasteServices
303-651-8416

Si usted necesita esta publicación en español favor de llamar al 303-651-8416

SPECIAL DISPOSAL DATES



PAPER SHREDDING EVENTS*

Longmont Recycling Center; 9 am–1 pm
JAN. 6 | FEB. 3 | MARCH 2
APRIL 6 | MAY 4 | JUNE 1
JULY 13 | AUG. 3 | SEPT. 7
OCT. 5 | NOV. 2 | DEC. 7

Dates and times are subject to change. Please visit bit.ly/collection-schedule or download the Waste Services app to confirm.

FREE LANDFILL DROP DAYS*

Front Range Landfill, 7 am–2 pm
MAY 11 | JUNE 15 | JULY 20 | AUG. 17

CURBSIDE SPRING BRANCH COLLECTION

APRIL 1-12

CURBSIDE FALL LEAF COLLECTION

OCT. 28 - NOV. 8

CHRISTMAS TREE RECYCLING*

DEC. 26, 2024- JAN. 5, 2025

The City of Longmont will provide four satellite Christmas tree drop-off locations. Please remove all holiday decorations and light strands from trees.

Roosevelt Park - In the parking lot South of 8th Avenue and Pratt Street by Roosevelt Activity Pool.

Garden Acres Park - In the parking lot at 18th Avenue and Tulip Street.

Kanemoto Park - In the parking lot at South Pratt Parkway and South Coffman Street.

Centennial Park - In the parking lot at Alpine Street and Verdant Circle.

In addition, you can recycle your Christmas tree at the [Longmont Recycling Center](#).

*Please bring identification and a digital or paper copy of your most recent Longmont utility bill.

LONGMONT RECYCLING CENTER



140 Martin St., Longmont

More details available at LongmontColorado.gov/WasteServices or by calling 303-651-8416

Hours of Operation: Cardboard and single stream drop-off bins are available 24/7. All other drop-off areas are open Monday–Saturday from 8 am–4 pm. The LRC is closed for holidays and may be closed for severe weather events.

Materials accepted:

- Tree limbs and leaves
- Single stream recycling materials
- Cardboard and paper
- Bulky metals (item must be 50% metal or more)
- Cooking and motor oils 5-gallon max/drop-off (1-gal containers only)
- Vehicle and rechargeable batteries (no alkaline batteries)
- Plastic bags
- Styrofoam (no peanuts)
- Food waste for compost
- Mulch available to residents - **FREE!**

Materials NOT accepted:

- Household Trash
- Furniture
- Antifreeze
- Grease
- Oil Filters
- Paints, chemicals, solvents
- Electronics
- Refrigerators, freezers, A/Cs
- Tanks & drums
- Lumber, tree stumps, root balls
- Concrete, asphalt, rocks
- Dirt or sod

HAZARDOUS MATERIALS

HOUSEHOLD HAZARDOUS WASTE DROP-OFF DAY*

Waste Services Center
 110 S. Martin St., Longmont

AUG. 24, 8 AM-NOON



longmontcolorado.gov/WasteServices

BOULDER



BOULDER COUNTY HAZARDOUS MATERIALS MANAGEMENT FACILITY

1901 63rd St., Boulder



The Boulder County Hazardous Materials Management Facility is open year-round Wednesday through Saturday, and is **FREE FOR LONGMONT RESIDENTS**. The facility is No. 4 on the map below.

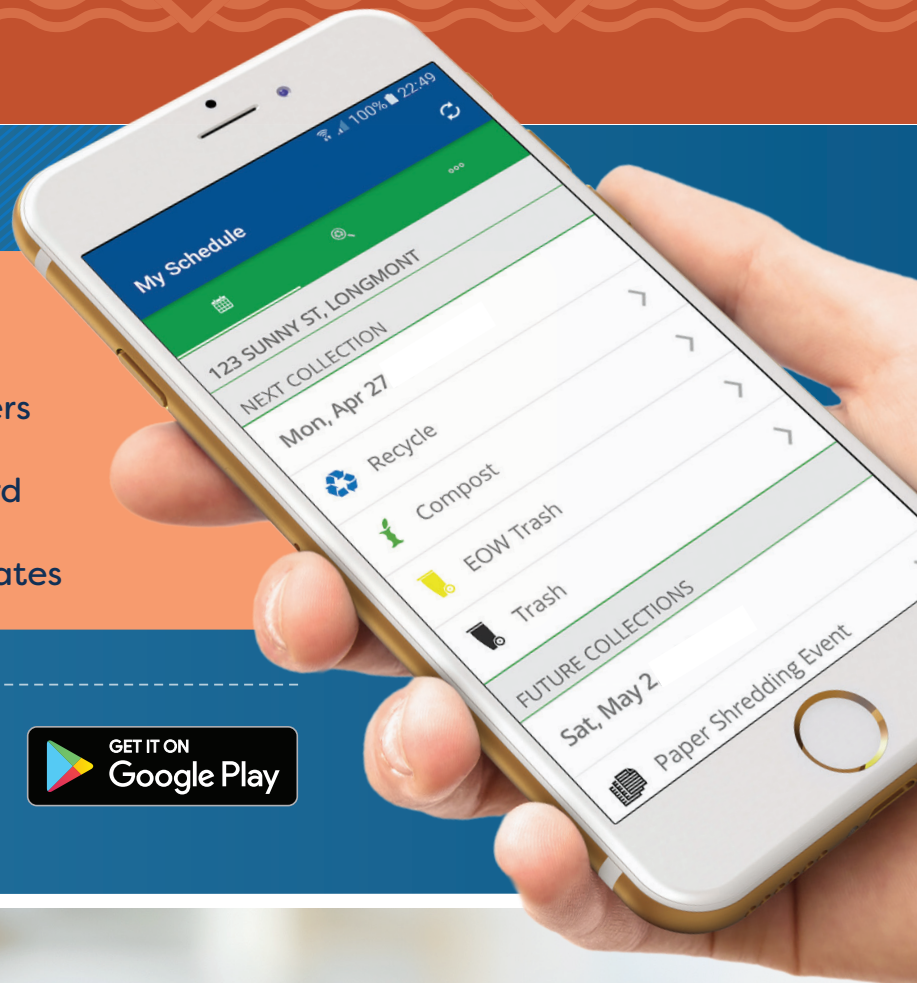
More details available at bit.ly/boco-hazmat or by calling 303-564-2251



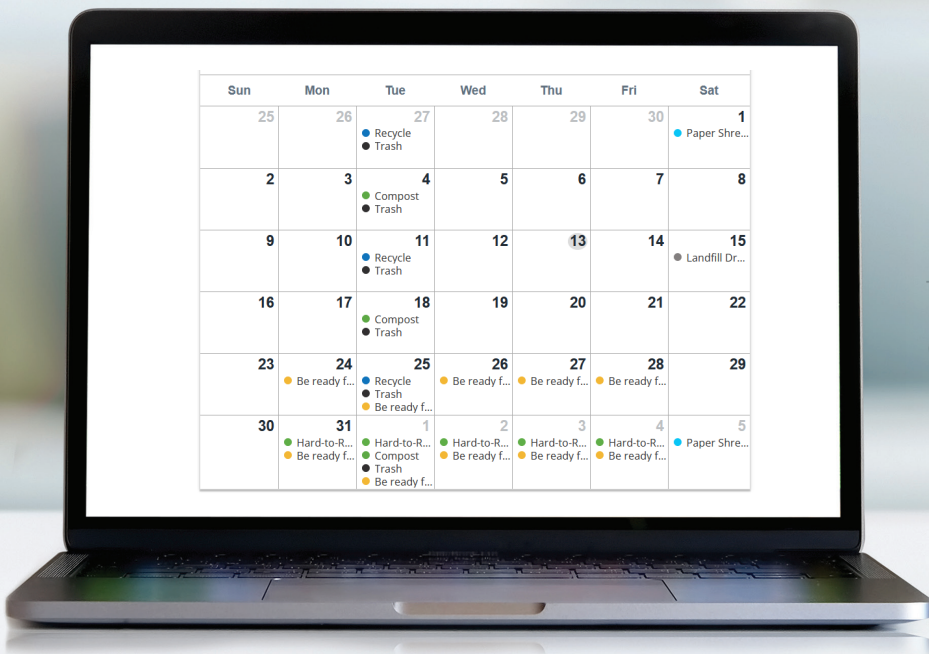
LONGMONT WASTE SERVICES APP

Trash day has never been easier!

- Receive pickup reminders and service alerts
- Access the Waste Wizard
- Learn about special collection events and dates



Need help signing up? Call 303-651-8416



VIEW YOUR CUSTOMIZED COLLECTION CALENDAR

Go to bit.ly/collection-schedule

for your trash, recycling and composting pick-up days and monthly schedule. Access online or print at your convenience.

- Collection map
- Special events
- Special collecting
- Reminders

ASK THE WASTE WIZARD

Use this easy web tool that helps you sort your waste properly. Just type in the name of the item and the Waste Wizard tells you exactly how to dispose of it.

bit.ly/longmont-wastewizard

How do I get rid of my mattress?

Is this recyclable?



24/7 SERVICEWORKS!

SERVICEWORKS! is our online tool to help residents manage their Waste Services and submit help requests 24/7.

Use ServiceWorks! to:

- Change your container size
- Request compost service
- Request cart repairs
- Notify us if your collection was missed
- Ask us general questions about Waste Services



Go to

ServiceWorks.LongmontColorado.gov

Tell us how we may assist you. It's that easy!

RECYCLING

THINK
BEFORE YOU THROW!

It's more important now than ever to ensure items are going into the right bins.



What can go in my bin?

What is recyclable?



longmontcolorado.gov/wasteservices
303-651-8416



RECYCLE

PLEASE...

- ✓ Set your blue lid recycle cart out by 7 am.
- ✓ Place your cart at least 2 feet away from trash or recycling carts, vehicles and other obstructions.
- ✓ Place recyclables loose and unbagged in your curbside cart.
- ✓ Wash cart periodically to prevent odors or pests.

PLEASE...

- NO** Styrofoam® Containers
- NO** Frozen Food Boxes
- NO** Shredded Paper
- NO** Hard-Back Books
- NO** Plastic Bags
- NO** Yard Waste

PAPER & CARDBOARD



Paperback Books

Paper Egg Cartons

Magazines, Brochures, Newspapers & Catalogs

Cardboard Boxes & Paper Bags
flatten boxes

Greeting Cards, Mail, File Folders, Office Paper & Blueprints
no neon or construction paper

CONTAINERS | Empty & Rinse



Clean, Balled Aluminum Foil 2" or Larger & Pie Pans

Aluminum/Metal Cans
do not flatten

Aerosol Cans
empty, no caps

Paper Milk/Juice Cartons
no foil pouches, do not flatten

Glass Bottles
no attached caps

Loose Metal Jar Lids & Steel Bottle Caps

PLASTICS | Empty & Rinse



Sturdy #2 & #5 Souvenir Cups

Berry Containers (remove liner), and other Plastic Clamshell Containers

Plastic Crates

Rigid Plastic Toys
remove metal axles, must fit in cart

Jugs

Yes - you can recycle plastic screw top caps - just be sure to leave them on.

Jars

Plastic Tub Lids

Buckets
handles OK

Bottles

Tubs

Take Out Containers
no food

Hard Plastic Four- and Six-Pack Holders

Flower Pots



NO PIZZA BOXES OR CARDBOARD
- put in Recycle cart!



COMPOSTING



COMPOST

PLEASE...

- ✓ Set your green lid compost cart out by 7 am.
- ✓ Place your cart at least 2 feet away from trash or recycling carts, vehicles and other obstructions.
- ✓ All compostables must fit in the cart. Always keep cart lid closed.
- ✓ Wash cart periodically or use 3-gallon CMA-approved compostable bags to prevent odors or pests.

PLEASE...

- NO** Aluminum or Metal
- NO** Construction Debris
- NO** Pet Waste
- NO** Plastic or Plastic Coatings
- NO** Dirt, Rocks or Sod; Treated/Painted Wood
- NO** Cardboard or Pizza Boxes
- NO** Styrofoam®
- NO** Glass or Ceramics

Sign up: call 303-651-8416 or visit longmontcolorado.gov/wasteservices



FOOD SCRAPS



YARD DEBRIS



No larger than 6 inches in diameter

